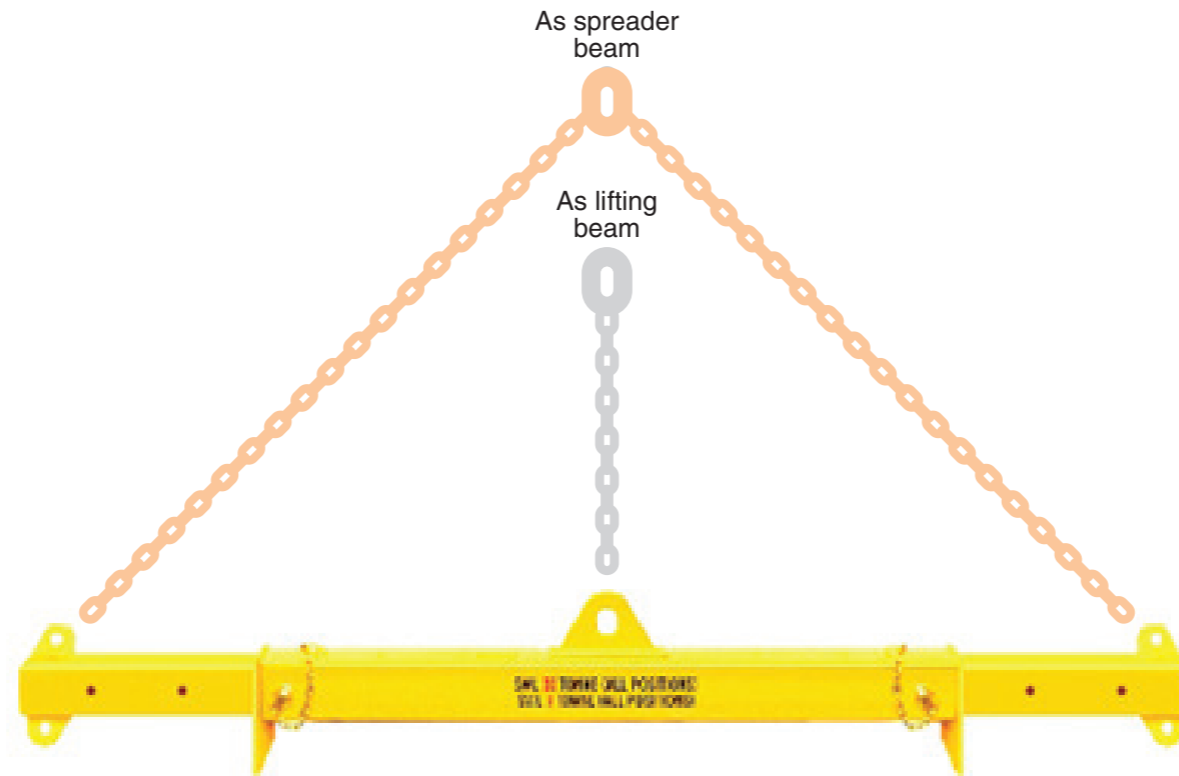
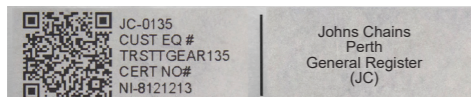


15T Extendable Combo Lifting/Spreader Beam



- With telescopic arms and pins to lock in place
- Versatile and simple to use
- NATA tested and certified
- Powder coated safety yellow finish
- QR coded – Scan for certificate
- Chains and shackles available to suit
- Clearly marked with W.L.L.
- I.D. tag that includes customer details
- Complies to AS4991

LUG CENTRES	W.L.L TONNES LIFTING BEAM	W.L.L TONNES SPREADER
2650	3.1T	15.0T
3050	2.7 T	14.0T
3450	2.4 T	13.0T
3850	2.0 T	13.0T



We can design & manufacture beams to suit your application requirements



Made in Western Australia

Tare weight: 141KG
Part N°: FABSPR152638