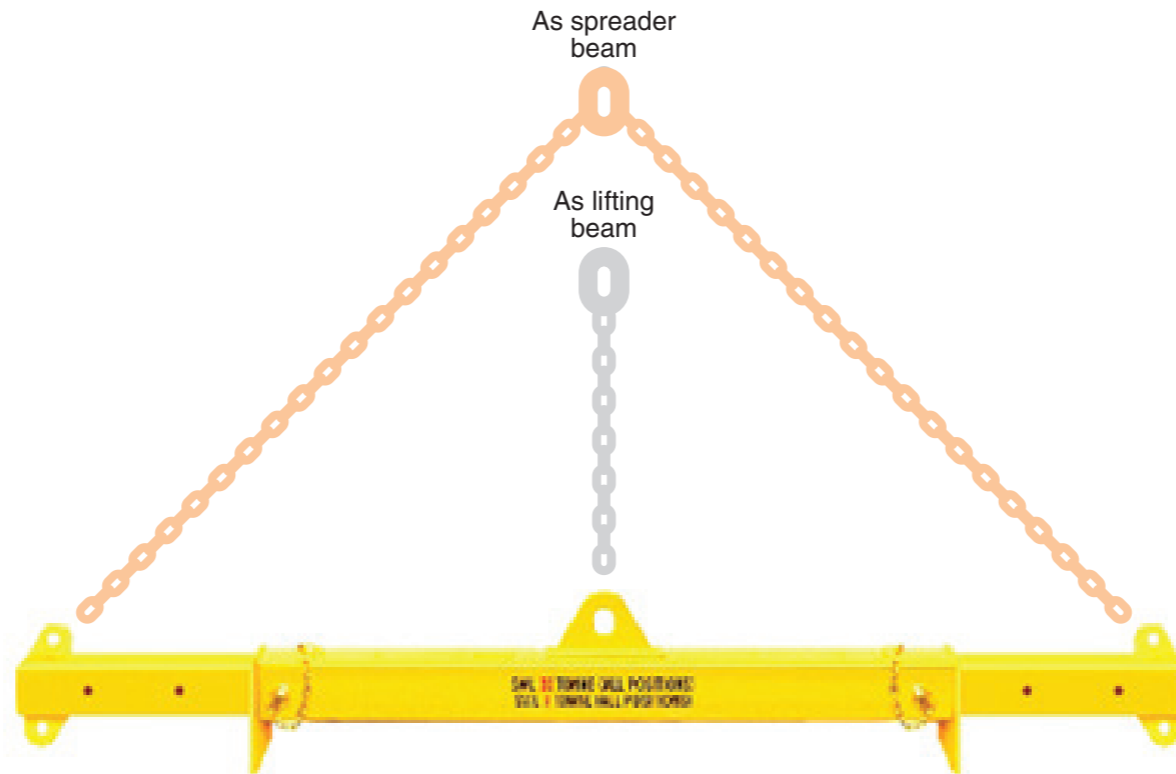
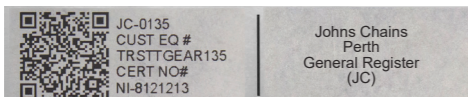


20T Extendable Combo Lifting/Spreader Beam



- With telescopic arms and pins to lock in place
- Versatile and simple to use
- NATA tested and certified
- Powder coated safety yellow finish
- QR coded – Scan for certificate
- Chains and shackles available to suit
- Clearly marked with W.L.L.
- I.D. tag that includes customer details
- Complies to AS4991

LUG CENTRES	W.L.L TONNES AS LIFTING BEAM	W.L.L TONNES AS SPREADER
4000	3.20T	20.0T
4500	2.60T	20.0T
5000	2.40T	20.0T
5500	2.15T	20.0T
6000	2.00T	20.0T



Johns Chains
Perth
General Register
(JC)

We can design & manufacture beams to suit your application requirements



Made in Western Australia

Tare weight: 345KG
Part N°: FABSPR204060