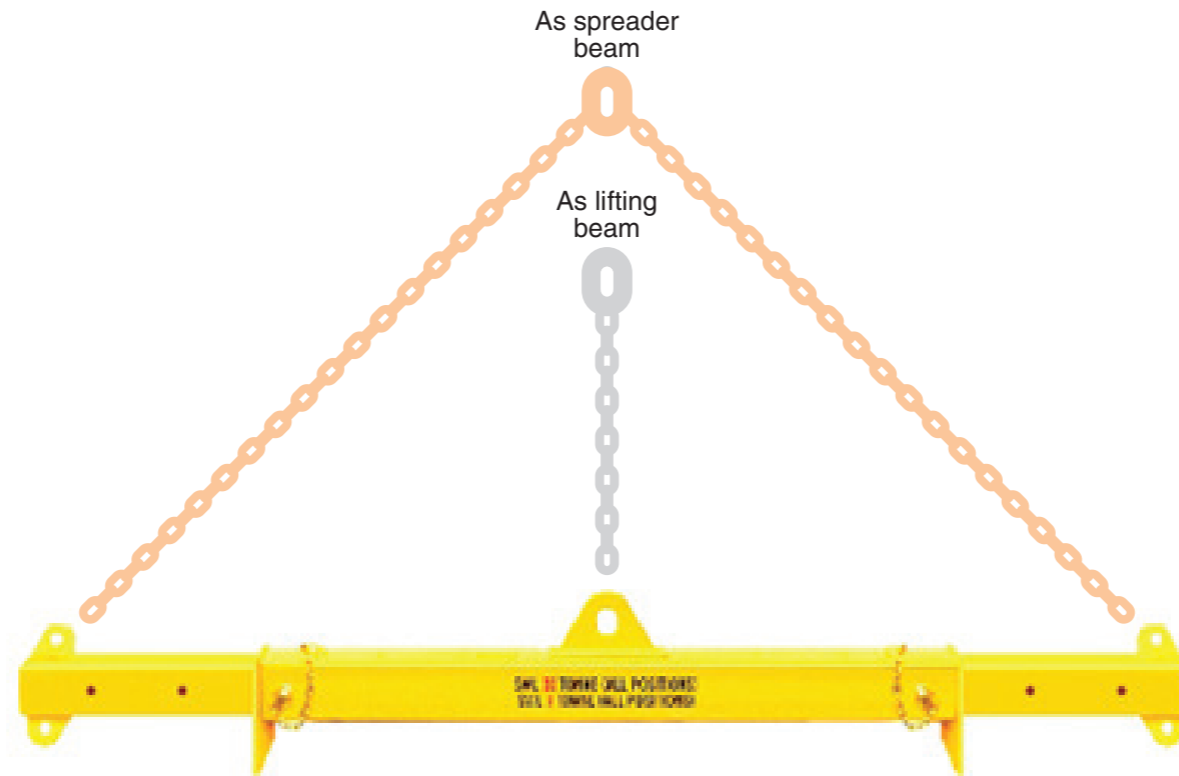
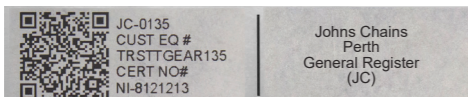


# 30T Extendable Combo Lifting/Spreader Beam



- With telescopic arms and pins to lock in place
- Versatile and simple to use
- NATA tested and certified
- Powder coated safety yellow finish
- QR coded – Scan for certificate
- Chains and shackles available to suit
- Clearly marked with W.L.L.
- I.D. tag that includes customer details
- Complies to AS4991

LUG CENTRES	W.W.L TONNES AS LIFTING BEAM	W.W.L TONNES AS SPREADER
4000	6.00T	30.0T
4500	5.25T	30.0T
5000	4.50T	30.0T
5500	4.25T	30.0T
6000	4.00T	30.0T



**We can design & manufacture beams to suit your application requirements**



Made in Western Australia

Tare weight: 452KG  
Part N<sup>o</sup>: FABSPR304060