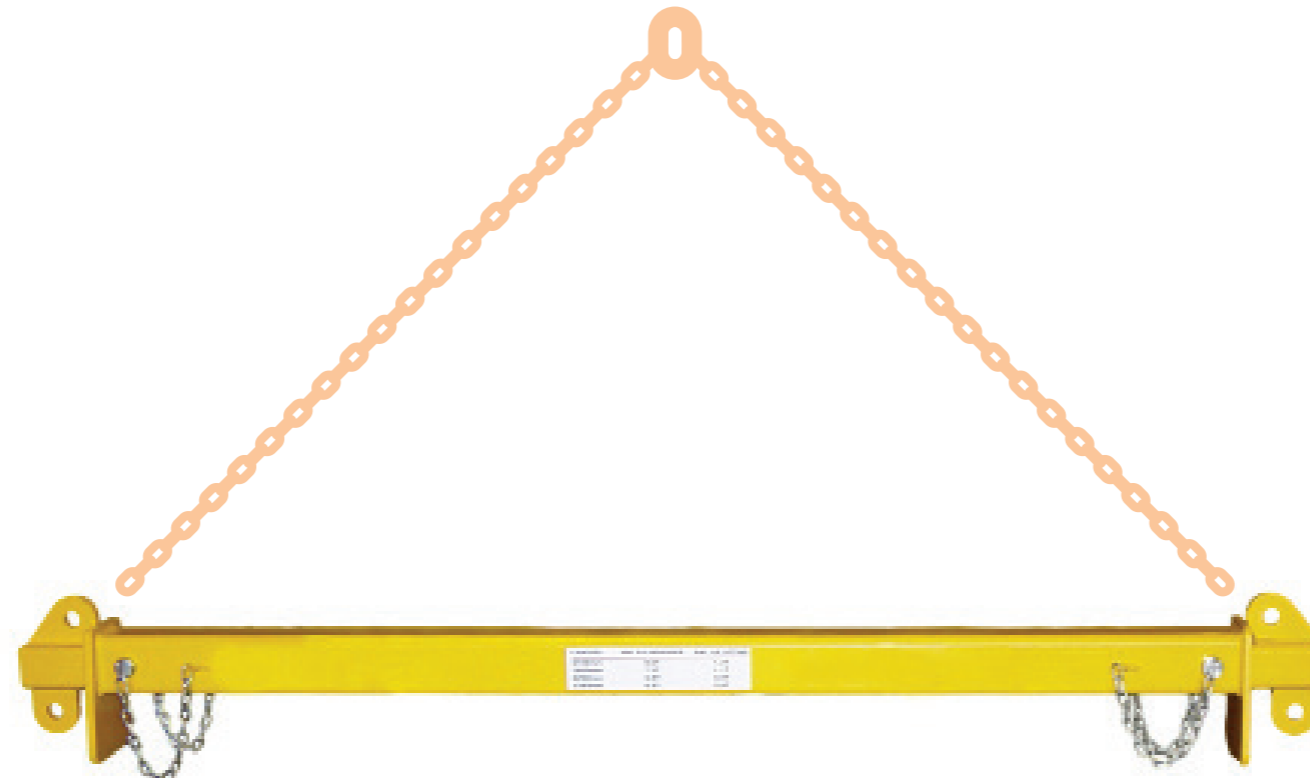


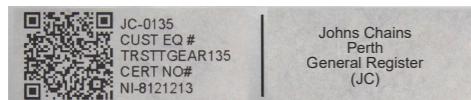
5T Extendable Spreader Beam



- With telescopic arms and pins to lock in place
- Versatile and simple to use
- NATA tested and certified
- Powder coated safety yellow finish
- QR coded – Scan for certificate
- Chains and shackles available to suit
- Clearly marked with W.L.L.
- I.D. tag that includes customer details
- Complies to AS4991

LUG CENTRES	W.L.L TONNES
2100	5T
2600	5T
3100	5T
3600	5T

We can design & manufacture beams to suit your application requirements



Made in Western Australia

Tare weight: 38KG
Part N°: FABSPR052136