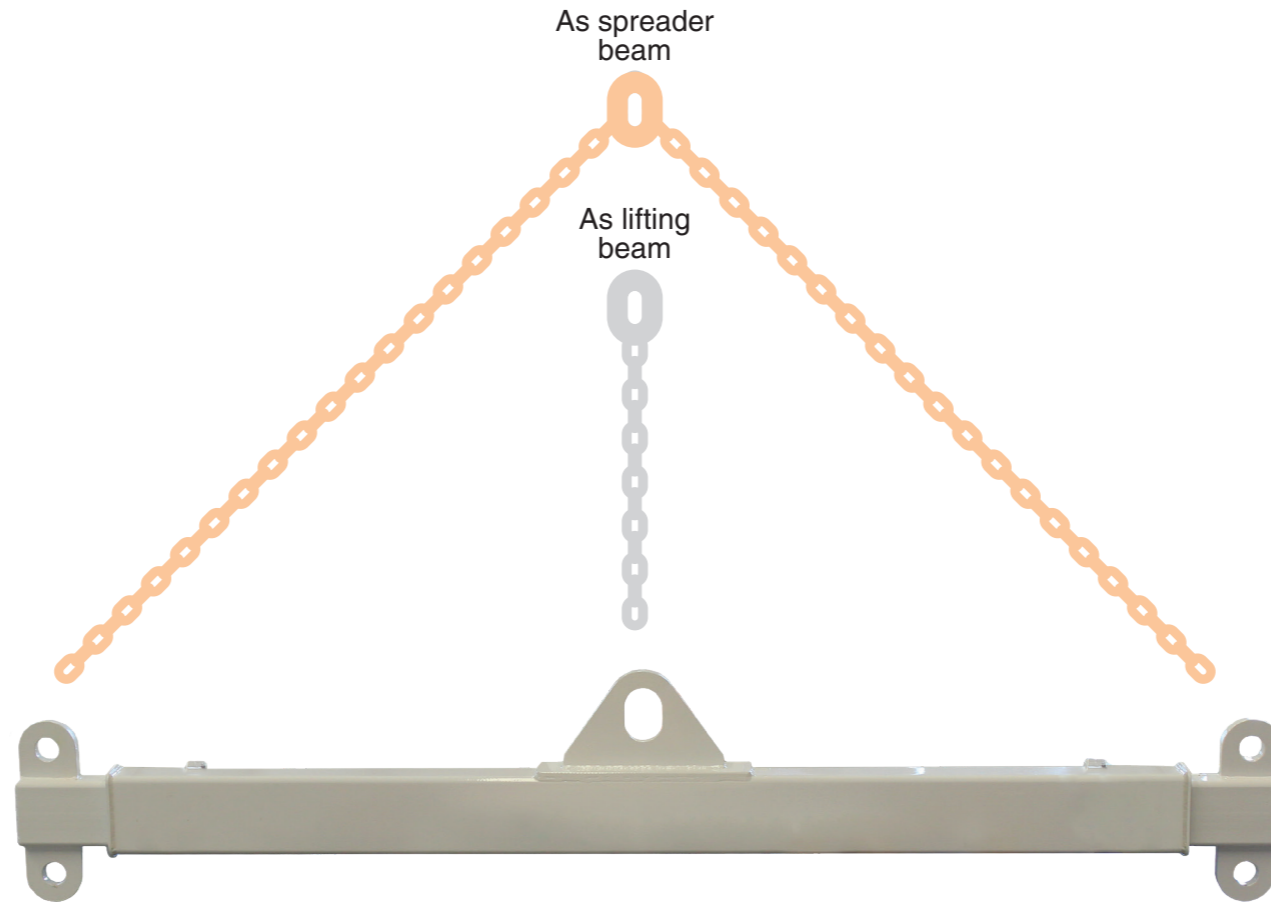
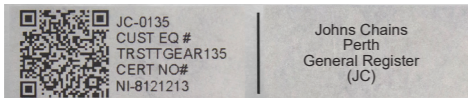


# 15T WLL FRANNA COMBO BEAM



- With telescopic arms and pins to lock in place
- Versatile and simple to use
- NATA tested and certified
- Powder coated safety finish
- QR coded – Scan for certificate
- Chains and shackles available to suit
- Clearly marked with W.L.L.
- I.D. tag that includes customer details
- Complies to AS4991

LUG CENTRES	W.L.L TONNES AS LIFTING BEAM	W.L.L TONNES AS SPREADER
2250	2.60T	15T
2510	2.30T	15T
2910	2.00T	15T
3310	1.75T	15T
3690	1.60T	15T



**We can design & manufacture beams to suit your application requirements**



Made in Western Australia

Tare weight: 95KG  
Part N<sup>o</sup>: FABSPR15FRANNAWHT