

# Catalogue Hoisting

DNV-GL



## THE RIGGING SHED

LIFTING & RIGGING EQUIPMENT SPECIALISTS



On completion of testing, The Rigging Shed will issue you with a test certificate and add the item to our online database which can be accessed by our customers 24/7.

For any enquiries or orders, call your nearest The Rigging Shed today, email us at [info@theriggingshed.com.au](mailto:info@theriggingshed.com.au), or visit [www.theriggingshed.com.au](http://www.theriggingshed.com.au).

**Wangara**

53 Prosperity Ave  
Wangara WA 6065  
ph (08) 9406 9999  
fax (08) 9406 9900

**Bibra Lake**

2/34 Discovery Dve  
Bibra Lake WA 6163  
ph (08) 9494 5800  
fax (08) 9434 1042

**Kalgoorlie**

25 Darcy Lne  
Kalgoorlie WA 6430  
ph (08) 9022 8600  
fax (08) 9022 8700

**Port Hedland**

23 Pinnacles Street  
Wedgefield WA 6721  
ph (08) 9406 9999  
fax (08) 9406 9900

# THE RIGGING SHED

**LIFTING & RIGGING EQUIPMENT SPECIALISTS**

FROM ON-SITE TO ON-LINE

Managing your lifting and rigging equipment supply and maintenance requirements

Specifications are subject to change without notice due to manufacturer's alterations and commercial tolerances.



# Chain Blocks

## Global Lifting

- All Global models are manufactured to comply with AS1418.2
- High strength end stop with secondary end anchor for increased safety
- “T” type latch for improved load holding integrity.  
Gear system design for reduced effort when lifting loads
- Includes a specially designed hand wheel to eliminate hand chain slippage and pocket wear
- Encapsulated bearings and side plate bearings for smoother operation
- Key internal components are machined before being heat-treated and toughened
- No aluminum content which ensures suitability for mining applications

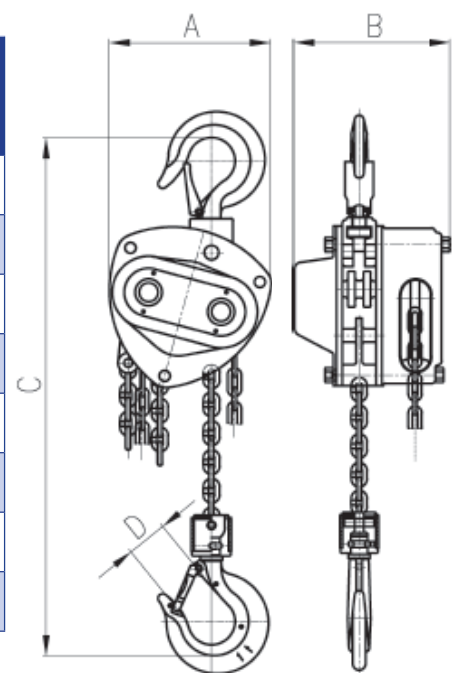


HOISTING

Available  
☆ with overload ☆  
protection

### SPECIFICATIONS

Model	Standard Lift (m)	Rated Capacity (tonnes)	Effort Required at Capacity (N)	Load Chain Size (mm)	Dimensions (mm)				Net Weight (Kg)
					A (mm)	B (mm)	C (mm)	D (mm)	
GLCB050	2.5	0.5	262	5 x 15	120	116	285	28	7
GLCB100		1.0	324	6 x 18	147	136	332	32	10
GLCB150		1.5	395	7.1 x 21	181	147	410	38	15
GLCB200		2.0	380	8 x 24	181	147	470	40	19
GLCB300	3	3.0	402	7.1 x 21	202	148	550	44	23
GLCB500		5.0	430	10 x 30	228	178	640	50	38
GLCB10T		10.0	438	10 x 30	373	178	737	64	68
GLCB20T		20.0	438	10 x 30	638	195	1022	82	160



**THE RIGGING SHED**  
LIFTING & RIGGING EQUIPMENT SPECIALISTS

# Chain Blocks

## Pacific

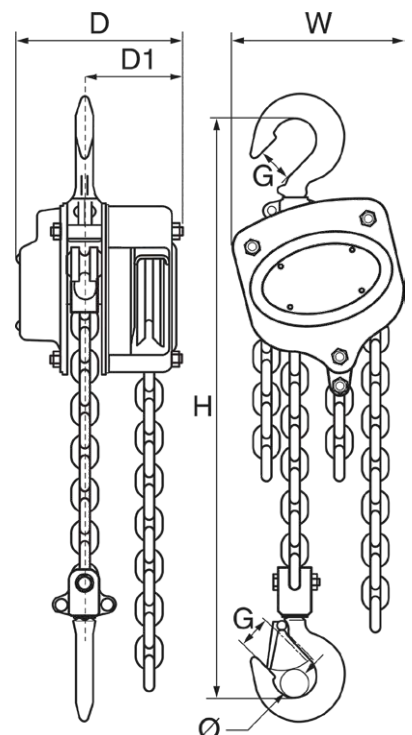
- Overload limiter option available upon request
- All Pacific models are manufactured to comply with AS1418.2.
- High strength end stop with secondary end anchor for increased safety.
- "T" type hooks for improved load holding integrity (except for the 250kg capacity).
- Gear system design for reduced effort when lifting loads.
- Includes a specially designed hand wheel to eliminate hand chain slippage and pocket wear.
- Encapsulated needle bearings and side plate bearings for smoother operation.
- Brake lockout bearing for security of braking mechanism.
- Key internal components are CNC machined before being heat-treated and toughened.
- Fitted with high quality European zinc plated Grade 80 load chain.
- No aluminium content which ensures suitability for mining applications.



☆ Available with overload ☆ protection

### SPECIFICATIONS

Product #	Lift Height (m)	Rated Capacity (tonnes)	Effort to lift Full load (N)	No. of Falls	D (mm)	D1 (mm)	W (mm)	H (mm)	G (mm)	Ø (mm)	Net Weight (kg)
CBL0.25X3P	3	0.25	190	1	106	68	108	280	20	18	6
CBL0.25X6P	6										9
CBL0.5X3P	3	0.5	210	1	128	75	130	280	22	20	9
CBL0.5X6P	6										13
CBL01X3P	3	1.0	285	1	142	76	150	330	26	25	12
CBL01X6P	6										15
CBL015X30P	3	1.5	325	1	158	80	170	360	29	30	14
CBL015X60P	6										16
CBL02X3P	3	2.0	355	1	175	88	185	385	35	33	20
CBL02X6P	6										26
CBL03X3P	3	3.0	340	2	158	80	220	510	37	36	23
CBL03X6P	6										32
CBL05X3P	3	5.0	400	2	183	90	225	615	43	43	39
CBL05X6P	6										46
CBL10X3P	3	10.0	450	4	195	95	355	810	47	44	65
CBL10X6P	6										88



## Pacific Hoists

# Chain Blocks

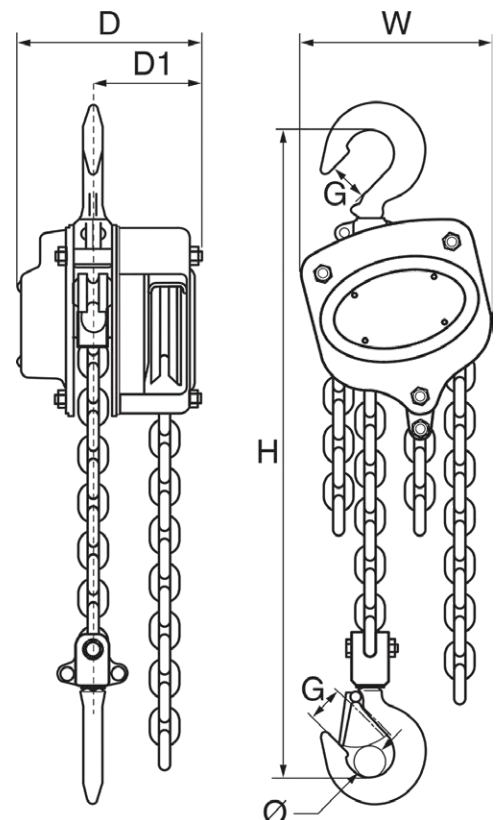
## Vital

- Manufactured in Japan using optimum high quality steel which conforms to the strict JIS & ISO regulations.
- All Vital models are manufactured to comply with AS1418.2.
- Designed for long-term use while providing the lowest possible per-use cost.
- Can be supplied close coupled and extra close coupled to girder trolleys to alleviate headroom restrictions.
- All Vital chain blocks can be supplied with overload protection.
- Customised lift height are available upon request.
- Quality caged needle bearings on load sheave and thrust bearings on bottom hook.
- Hardened alloy steel load chain with embossed identification, marked as to the relevant standards.
- Load chain exceeds Australian Standards with 5:1 Safety Factor.



### SPECIFICATIONS

Product #	Rated Capacity (tonnes)	Lift Height (m)	Pull to Lift Load (kg)	Net Weight (kg)	D (mm)	W (mm)	H (mm)	G (mm)
CBL0530VITAL	0.5	3.0	25	8.6	127	144	305	27
CBL1030VITAL	1.0	3.0	33	11.5	147	157	345	30
CBL1530VITAL	1.5	3.0	34	13.8	147	174	370	34
CBL2030VITAL	2.0	3.0	34	21.6	179	204	425	37
CBL3030VITAL	3.0	3.0	35	23.0	147	206	505	43
CBL5030VITAL	5.0	3.0	39	41.0	179	263	635	47
CBL7530VITAL	7.5	3.0	41	60.5	179	345	740	67
CBL91030VITAL	10.0	3.0	41	78.0	179	367	760	67
CBL91530VITAL	15.0	3.0	41x2	150.0	207	745	850	87
CBL92030VITAL	20.0	3.0	41x2	190.0	207	873	870	87



**VITAL**

# Chain Blocks

## Kito M3

- M3 Series Chain Blocks are designed for maximum durability and safety in continuous heavy duty applications.
- Available in standard lift heights of 3 and 6 metres, these premium units can also be close coupled to PWB Anchor push and geared trolleys.
- Optional lift heights also available.
- Applications: Mining, engineering, construction.
- Australian Standard: AS 1418.2

### SPECIFICATIONS

Product #	Lift Height (m)	Rated Capacity (tonnes)	Headroom (mm)	Close Headroom (mm)	Load Chain Diameter (mm) x fall	Net Weight (kg)
CBL0.5X3K	3	0.5	360	405	5.0 x 1	10.0
CBL0.5X6K	6					
CBL01X3K	3	1.0	410	440	6.3 x 1	11.5
CBL01X6K	6					
CBL015X30K	3	1.5	470	495	7.1 x 1	14.5
CBL02X3K	3	2.0	500	520	8.0 x 1	21.0
CBL02X60K	6					
CBL03X3K	3	3.0	540	595	7.1 x 2	24.0
CBL03X6K	6					
CBL05X3K	3	5.0	640	720	9.0 x 2	41.0
CBL05X6K	6					
CBL075X3K	3	7.5	810	865	9.0 x 3	63.0
CBL10X3K	3	10.0	780	890	9.0 x 4	83.0
CBL10X6K	6					

## Kito M3 with overload limiter

### SPECIFICATIONS

Product #	Lift Height (m)	Rated Capacity (tonnes)	Headroom (mm)	Close Headroom (mm)	Load Chain Diameter (mm) x fall	Net Weight (kg)
CBL0.5X3KOL	3	0.5	360	405	5.0 x 1	10.0
CBL0.5X6KOL	6					
CBL01X3KOL	3	1.0	410	440	6.3 x 1	11.5
CBL01X6KOL	6					
CBL02X3KOL	3	2.0	500	520	8.0 x 1	21.0
CBL02X6KOL	6					
CBL03X3KOL	3	3.0	540	595	7.1 x 2	24.0
CBL03X6KOL	6					
CBL05X3KOL	3	5.0	640	720	9.0 x 2	41.0
CBL05X6KOL	6					



# KITO

**THE RIGGING SHED**  
LIFTING & RIGGING EQUIPMENT SPECIALISTS



# Lever Hoists

## Kito LX

- Lightweight, compact and portable.
- Optional lift heights available.
- Easy to carry and easy to use, even in tight quarters or in elevated work locations.
- Fasteners are designed to protect threads from damage, making maintenance easier.
- Nickel plated chain.
- The hook latch is highly resistant to deformation and damage.
- Single-step reduction gear, requires manual fastening force and assured load holding.
- Australian Standard: AS 1418.2

### SPECIFICATIONS

Product #	Rated Capacity (kg)	Lift Height (m)	Headroom (mm)	Load Chain Dia. (mm) x fall	Lead Chain Dia. x Pitch (mm)	Weight (kg)
LEV025LX	250	1.0	205	3.2 x 1	3.2 x 9.0	1.7
LEV05LX	500	2.0	246	4.3 x 1	4.3 x 12.0	2.7

## Kito L5 Series

- Available with overload limiter for mining and offshore applications.
- Unique patented 'Free wheeling hub' mechanism.
- Smaller, lighter, high grade (solid), alloy steel frame construction.
- Double brake pads with four braking surfaces.
- Double pawl and double spring assemblies.
- Nickel plated grade 100 load chain.
- Australian Standard: AS 1418.2

### SPECIFICATIONS

Product #	Rated Capacity (tonnes)	Headroom (mm)	Lever Length (mm)	Load Chain Diameter (mm) x fall	Weight (kg)
LEV0800KITO	0.8	280	245	5.6 x 1	5.7
LEV1.0KITO	1.0	300	245	5.6 x 1	5.9
LEV1.6KITO	1.6	335	265	7.1 x 1	8.0
LEV25KITO	2.5	375	265	8.8 x 1	11.2
LEV3.2KITO	3.2	395	415	10 x 1	15.0
LEV6.3KITO	6.3	540	415	10 x 2	26.0
LEV9KITO	9.0	680	415	10 x 3	40.0



# KITO

# Lever Hoists

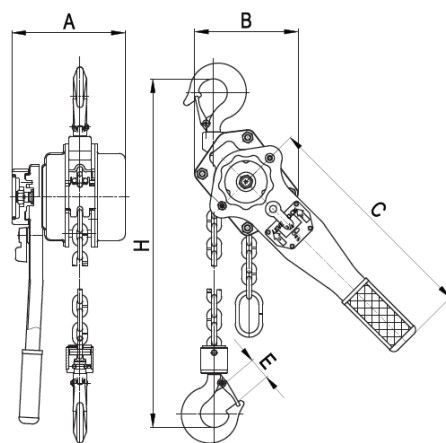
## Global Lifting

- All Global models are manufactured to comply with AS1418.2
- "T" type latch for improved load holding integrity (except for the 250kg capacity)
- New design double pawl safety springs to eliminate sticking
- New style cast hand wheel for added strength and durability
- Encapsulated bearings and side plate bearings for smoother operation
- Key internal components are machined before being heat-treated and toughened.
- No aluminum content which ensures suitability for mining applications
- Overall better design and improved finish to prolong life expectancy

Available  
★ with overload ★  
protection

### SPECIFICATIONS

Model	Standard Lift (m)	Rated Capacity (tonnes)	Effort Required at Capacity (N)	Load Chain Size (mm)	Dimensions					Net Weight (kg)
					A (mm)	B (mm)	C (mm)	H (mm)	E (mm)	
GLLB025	1.5	0.25	217	4 x 12	92	75	205	153	17	1.85
GLLB050		0.5	303	5 x 15	110	82	260	261	23	4.6
GLLB080		0.8	196	6 x 18	148	135	295	290	26	7
GLLB160		1.6	220	8 x 24	174	160	423	385	30	11
GLLB320		3.2	325	10 x 30	193	209		477	34	20
GLLB630		6.3	343			263		550	47	30
GLLB900		9.0	348			366		720	64	46





# Lever Hoists

## Pacific

- All Pacific models are manufactured to comply with AS1418.2.
- "T" type hooks for improved load holding integrity (except for the 250kg capacity).
- New design double pawl safety springs to eliminate sticking.
- New style cast hand wheel for added strength and durability.
- Encapsulated needle bearings and side plate bearings for smoother operation.
- Brake lockout bearing for security of braking mechanism.
- All Pacific lever blocks can be supplied with overload protection (except 250kg).
- Key internal components are CNC machined before being heat-treated and toughened.
- Fitted with high quality European zinc plated Grade 80 load chain.
- No aluminium content which ensures suitability for mining applications.

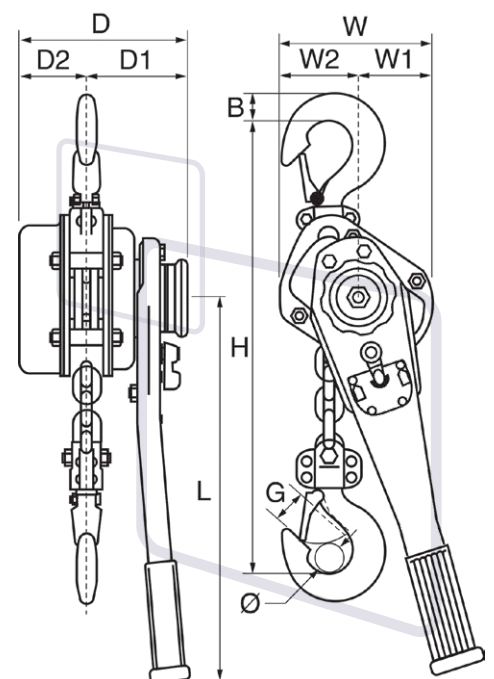
Available  
☆ with overload ☆  
protection

### SPECIFICATIONS

Product #	Rated Capacity (tonnes)	Lift Height (m)	Test Load (kg)	Effort to lift full load (N)	No. of Falls	Load Chain (mm x mm)	Net Weight for 1.5m Lift (kg)
LEV025P	0.25	1.5	375	115	1	Ø4 x 12	1.86
LEV05P	0.5	1.5	750	248	1	Ø5 x 15	4.42
LEV08P	0.8	1.5	1200	285	1	Ø5.6 x 17	5.71
LEV1.6P	1.6	1.5	2400	315	1	Ø7.1 x 21	9.27
LEV32P	3.2	1.5	4800	360	1	Ø10 x 28	16.5
LEV32P	6.3	1.5	9450	370	2	Ø10 x 28	21.29

### DIMENSIONS

Product #	Rated Capacity (tonnes)	D (mm)	D1 (mm)	W (mm)	H (mm)	L (mm)	G (mm)	Ø (mm)
LEV025P	0.25	100	70	86	235	168	20	18
LEV05P	0.5	143	85	118	310	253	22	20
LEV08P	0.8	147	87	132	340	273	26	25
LEV1.6P	1.6	173	99	145	400	378	29	30
LEV32P	3.2	200	112	198	520	418	37	36
LEV32P	6.3	200	112	230	640	418	43	43



Pacific Hoists

# Lever Hoists

## Vital

- Manufactured in Japan using optimum high quality steel which conforms to the strict JIS & ISO regulations.
- All Vital models are manufactured to comply with AS1418.2.
- Vital lever blocks can be supplied with overload protection for added security of use (excluding 250kg and 500kg models).
- The unique design of the bottom hook prevents slipping and ensures safe operation.
- Hardened alloy steel load chain with embossed identification, marked as to the relevant standards.
- Load Chain Exceeds Australian Standards with 5:1 Safety Factor.

## Vital VR-2 Series

- Easy two-step operation to prevent accidental free-wheeling.
- The Vital VR-2 series are suitable for tandem lifting applications.

### SPECIFICATIONS

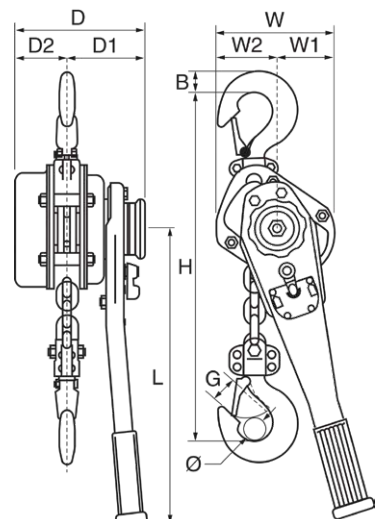
Product #	Rated Capacity (tonnes)	Standard Lift Height (m)	Pull to Lift Load (kg)	Net Weight (kg)	Chain Size (mm)	No. of Falls	D (mm)	W (mm)	H (mm)	L (mm)	G (mm)
LEV08VITAL	0.8	1.5	15	6.9	6.3	1	148	128	295	260	27
LEV16VITAL	1.6	1.5	18	9.7	7.1	1	163	148	355	370	34
LEV32VITAL	3.2	1.5	38	16.3	9.0	1	191	181	405	370	43
LEV63VITAL	6.3	1.5	39	26.7	9.0	2	191	244	550	370	47

## Vital NR-2 Series

- One-touch operation for free chain adjustment.
- Minimum load requirement of up to 10% of the Working Load Limit to ensure the operation of the braking system.  
E.g. a 1.5 tonne lever block requires a minimum load of 150kg.

### SPECIFICATIONS

Product #	Rated Capacity (tonnes)	Standard Lift Height (m)	Pull to Lift load (kg)	Net Weight (kg)	Chain Size (mm)	No. of Falls	D (mm)	W (mm)	H (mm)	L (mm)	G (mm)
LEV025VITAL	0.25	1.0	30	1.9	4.0	1	85	65	230	150	24
LEV05VITAL	0.5	1.5	34	3.5	5.0	1	110	82	260	267	27
LEV08VITAL	0.8	1.5	21	6.0	5.6	1	146	119	295	256	27
LEV1.0VITAL	1.0	1.5	23	7.2	6.3	1	146	126	325	256	30
LEV1.6VITAL	1.6	1.5	27	9.8	7.1	1	161	146	350	368	34
LEV32VITAL	3.2	1.5	38	16.6	9.0	1	191	180	425	368	43
LEV63VITAL	6.3	1.5	39	27.0	9.0	2	191	243	565	368	47
LEV9VITAL	9.0	1.5	30	47.3	9.0	3	191	318	680	368	67



**VITAL**

# Lever Hoists

## Mocal

- Strong, aluminium alloy body.
- Compact design.
- Robust monoblock gear box preventing shaft deflection and distortion.
- Steel alloy chain with 5 times rated capacity.

### SPECIFICATIONS

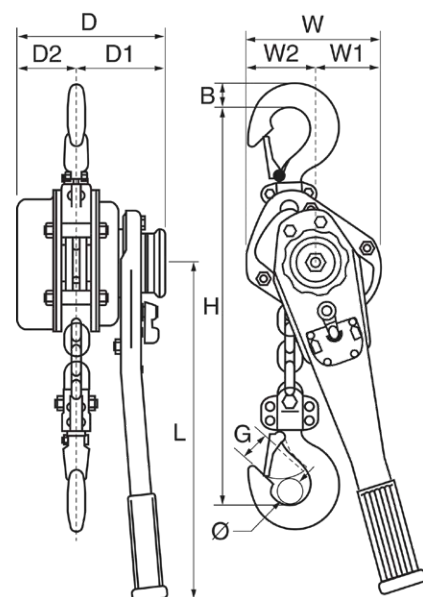
Product #	Model/ Rated Capacity (tonnes)	Lift (m)	Min. dist. between hooks (mm)	Handle length from pinion centre (mm)	Handle effort (kg)	Net weight (kg)	Gross weight (kg)
LEV05LX	0.75	1.5	300	300	15	6.5	7.0
LEV1.0MOCAL	1.0	1.5	325	300	21	7.0	7.5
LEV1.5MOCAL	1.5	1.5	380	300	16	10.0	10.7
LEV3.0MOCAL	W3.0	1.5	495	300	17	16.0	16.9
LEV3.0MOCAL	S3.0	1.5	450	400	21	18.0	19.2
LEV6.0MOCAL	6.0	1.5	625	400	23	32.0	33.8

### DIMENSIONS

Product #	Model/Rated Capacity (tonnes)	H (mm)	B (mm)	G (mm)	L (mm)	D (mm)	D2 (mm)	D1 (mm)	W2 (mm)	W1 (mm)	W (mm)
LEV05LX	0.75	300	21	22	300	154	49	105	46.5	57	103.5
LEV1.0MOCAL	1.0	325	23	24.5	300	154	49	105	46.5	67	113.5
LEV1.5MOCAL	1.5	380	27	26	300	176.5	74	102	60	82	142
LEV3.0MOCAL	W3.0	495	35	29	300	176.5	74	102.5	60	126	186
LEV3.0MOCAL	S3.0	450	35	29	400	211.5	93.5	118	75	93	168
LEV6.0MOCAL	6.0	625	50	49	400	211.5	93.5	118	75	168	243



HOISTING



# MOCAL



# Pullers

## CM

- The CM Puller is a lightweight tool that lifts or pulls with minimum effort. The puller has almost unlimited applications as it can pull or lift in the vertical or horizontal position or at any angle.
- Overload protection is available as an optional extra.
- Designed for heavy-duty construction and industrial applications.
- Aluminium alloy construction, weather proofing and powder coat finish.
- Corrosion resistant.
- Applications: Manufacturing, construction and mining.
- Australian Standard: AS 1418.2

### SPECIFICATIONS

Product #	Capacity (tonnes)	Headroom (mm)	Lever Length (mm)	Load Chain Dia. (mm) x Fall	Weight (kg)
PULLCM0.75	0.75	273	540	6.1 x 1	6.3
PULLCM1.5	1.5	362	540	7.9 x 1	10.9
PULLCM3.0	3.0	432	540	7.9 x 2	20.0
PULLCM6.0	6.0	543	540	7.9 x 4	29.5

# CM



**THE RIGGING SHED**  
LIFTING & RIGGING EQUIPMENT SPECIALISTS

Repairs  
and Testing



# NGK Pullers

## Models N-1000P & N-1500P (1.5m pull)

- Handle is insulated and rotates full 360°.

### SPECIFICATIONS

Product #	Capacity (tonnes)	Strap Size (mm)	Min. Length (mm)	Max. Length (mm)	Lever Length (mm)	Weight (kg)
PULLNGKRAT1.0	1.0	2 x 33	440	1940	400	3.3
PULLNGKRAT1.5	1.5	2 x 40	470	1970	460	4.6

## Model 3000

- With 2 pawls, aluminium housing, alloy link chain, steel handle rotates full 360°. Optional chain bag.

### SPECIFICATIONS

Product #	Capacity (tonnes)	Chain Dia. (mm)	Min. Length (mm)	Max. Length (mm)	Lever Length (mm)	Weight (kg)
PULLNGKRAT3.0	3.0	5	480	2000	430	8

## Model N-1500P-EX

- (1.5m double (D) x 3m single (S) pull) Convertible with 3 hooks, handle is insulated and rotates full 360°.

### SPECIFICATIONS

Product #	Capacity	Strap Size (mm)	Min. Length (mm)	Max. Length (mm)	Lever Length (mm)	Weight (kg)
PULLNGKN1500P-EX	15kN x 7.5kN	2x40	500	D: 2000 S: 3500	460	5

## Model P-1500-EX

- (3m double (D) x 6m single (S) pull) Steel handle rotates full 360°.

### SPECIFICATIONS

Product #	Capacity	Wire Dia. (mm)	Min. Length (mm)	Max. Length (mm)	Lever Length (mm)	Weight (kg)
PULLNGKP1500-EX	1.5kN x 7.5kN	AIR5	500	D: 3500 S: 6500	430	5

## Model Ricky (1.5m pull)

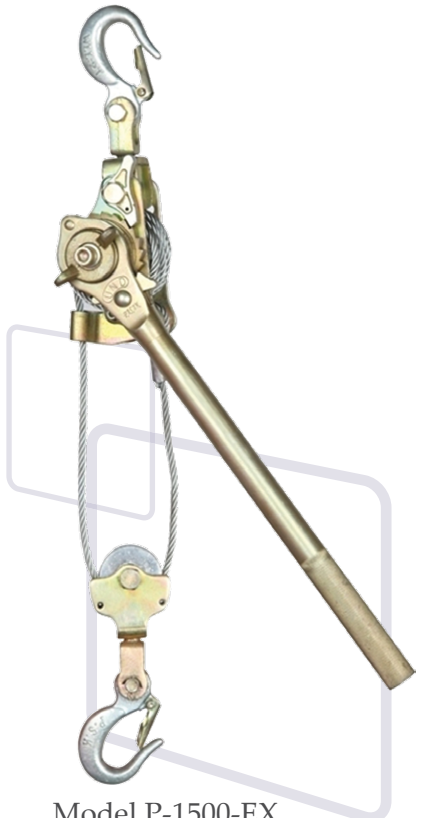
- Light weight, alloy link chain, handle rotates full 360°.

### SPECIFICATIONS

Product #	Capacity (tonnes)	Chain Dia. (mm)	Min. Length (mm)	Max. Length (mm)	Lever Length (mm)	Weight (kg)
PULLNGKRICKY-2	0.75	5	300	1800	230	4
PULLNGKRICKY-3	1.5	5	350	1850	230	5



Models N-1000P & N-1500P



Model P-1500-EX

**N.G.K. NAGAKI**

# Push Trolley

## Global Lifting

- All Global models are manufactured to comply with AS1418.2
- Fully adjustable to suit various beam widths
- Fitted with anti-drop plates for improved safety and compliance.
- High-grade, fully sealed bearings for maintenance free extended life.

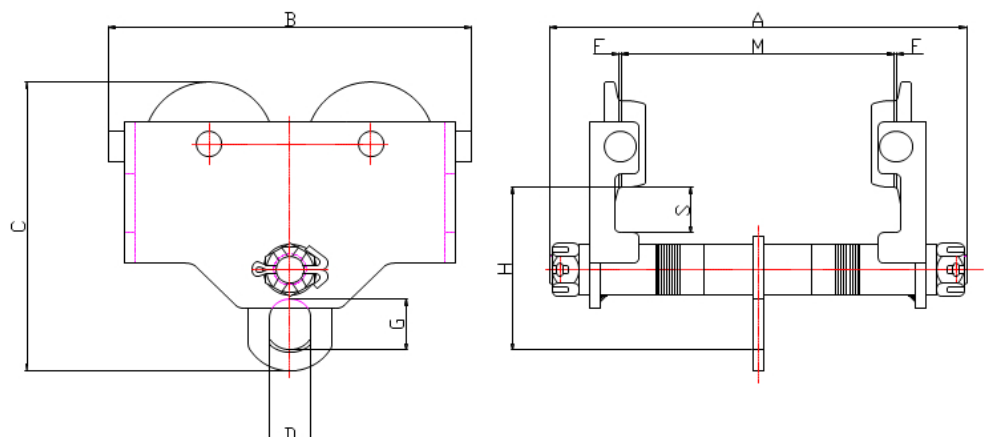


### SPECIFICATIONS

Model	Rated Capacity (Kg)	Test Load (Kg)	Beam Width Range (mm)	Min. Radius of Curve (mm)	Net Weight (mm)	Pin Configuration (mm)
GLPT050	500	750	50 – 152	0.8	6.0	Single
GLPT100	1,000	1,500	64 – 203	0.9	11.5	Single
GLPT200	2,000	3,000	88 – 203	1.0	18	Single
GLPT300	3,000	4,500	100 – 203	1.2	30	Single
GLPT500	5,000	7,500	114 – 203	1.3	44	Single
GLPT10T	10,000	15,000	124 – 203	2.0	86	Double

### DIMENSIONS

Model	A (mm)	B (mm)	C (mm)	D (mm)	F (mm)	G (mm)	H (mm)	S (mm)	M (Min./Max.) (mm)
GLPT050	244	223	188	24	1.5 – 3.0	32	105	30	50 – 152
GLPT100	310	270	224	30		40	126.5	35.5	64 – 203
GLPT200	327	300	261	38		52	146	36	88 – 203
GLPT300	342	356	308.5	40		62	169	38	100 – 203
GLPT500	354	405	354	50		75	197	41	114 – 203
GLPT10T	380	490	395	72	2 – 3.5	112	189	45	124 – 203





# Beam Clamp

## Global Lifting

- All Global models are manufactured to comply with AS4991.
- These clamps are used to safely suspend loads in many applications from girders (I-beams)
- Manual, Electric and Air hoist installations are examples of their wide capability of usage.
- Quick and easy to install and reposition makes them ideal for maintenance tasks.
- Jaws clamp over girder flanges
- Also suitable for lifting I-beams

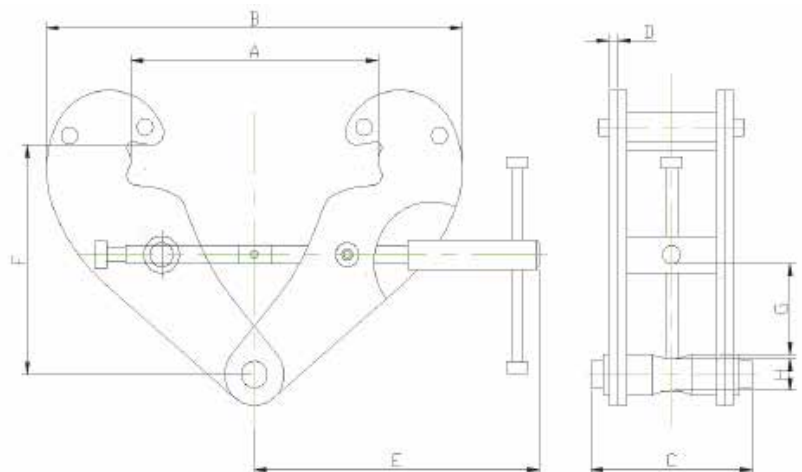


### SPECIFICATIONS

Model	Rated Capacity (Kg)	Test Load (Kg)	Beam Width Range (mm)	Net Weight (Kg)
GLGC100	1,000	1,500	80 – 240	3.5
GLGC200	2,000	3,000	80 – 240	4.5
GLGC300	3,000	4,500	90 – 330	9.5
GLGC500	5,000	7,500	90 – 330	11.0
GLGC10T	10,000	15,000	90 – 350	16.0

### DIMENSIONS

Model	A (Max.) (mm)	B (Min./Max.) (mm)	C (mm)	D (mm)	E (mm)	F (Min./Max.) (mm)	G (Min.) (mm)	H (mm)
GLGC100	270	183 – 370	94	4	198	100 – 154	22	20
GLGC200	270	183 – 370	102	6	198	100 – 154	22	20
GLGC300	355	243 – 500	132	8	263	148 – 219	46	22
GLGC500	355	243 – 500	142	10	263	148 – 219	43	28
GLGC10T	364	269 – 521	180	12	285	165 – 239	51	38



# Girder Trolley with Clamp

## Titan Lifting Technologies

- Robust all-steel construction
- Durable baked enamel paint protection
- Super quick adjustment to any girder width in range
- Spare parts always available
- Complies with AS1418.2
- With capacities from 1 tonne to 5 tonnes

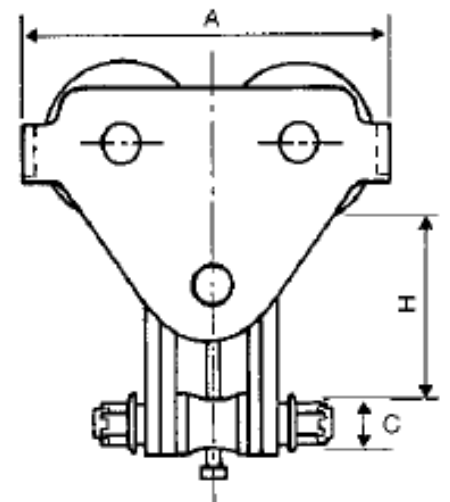
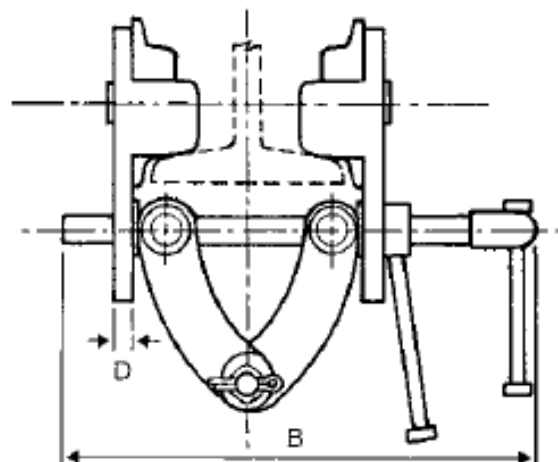


### SPECIFICATIONS

Model	Working Load Limit (Kg)	Test Load (kN)	Min. Radius (mm)	Beam Width (mm)	Net Weight (Kg)
OGCT01	1,000	12.25	1.1	63 – 203	11
OGCT02	2,000	24.5	1.3	76 – 203	13
OGCT03	3,000	36.8	1.5	85 – 210	26
OGCT05	5,000	61.3	1.7	100 – 305	46

### DIMENSIONS

Model	Dimensions (mm)				
	A (mm)	B (mm)	C (mm)	D (mm)	H (mm)
OGCT01	260	340	Ø 20	10	171 – 232
OGCT02	260	340	Ø 20	12	237 – 287
OGCT03	330	360	Ø 24	14	160 – 200
OGCT05	380	480	Ø 24	19	225 – 280

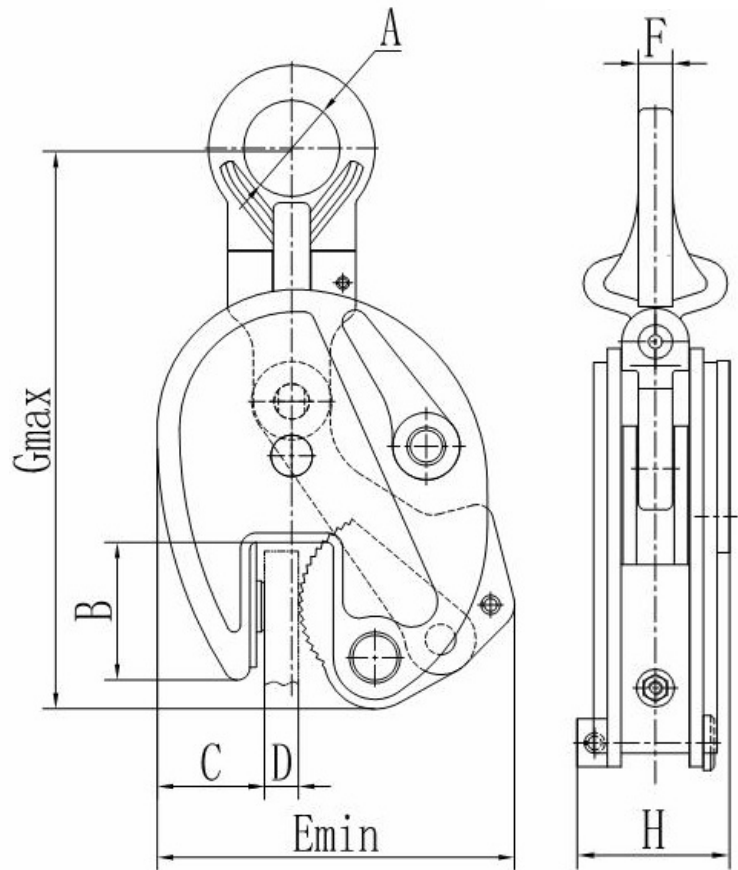


**Ti TAN**  
LIFTING TECHNOLOGIES

# Plate Clamps – Universal

## Global Lifting

- The Global Plate Clamps are manufactured to comply with AS4991
- These clamps are ergonomically designed to improve the user experience. They are compact and light-weight without compromising the quality of the design.
- Suitable for the lifting and transferring of steel plates and other materials in a wide variety of industries such as; shipbuilding, construction, fabrication, manufacturing and off-shore applications.



### SPECIFICATIONS

Model	Rated Capacity (Kg)	Jaw (mm)	Dimensions (mm)								Net Weight (Kg)
			A (mm)	B (mm)	C (mm)	D (mm)	E (Min.) (mm)	F (mm)	G (Max.) (mm)	H (mm)	
GLUC050	500	0 – 15	φ30	43	34	0 – 17	106	10	216	50	2
GLUC100	1,000	0 – 20	φ48	63	50	0 – 22	145	12	292	66	4.5
GLUC200	2,000	0 – 25	φ68	78	61	0 – 27	174	16	369	76	7.3
GLUC300	3,000	0 – 30	φ74	85	57	0 – 32	207	20	428	102	15
GLUC500	5,000	0 – 50	φ80	100	66	0 – 52	240	24	481	110	21.6

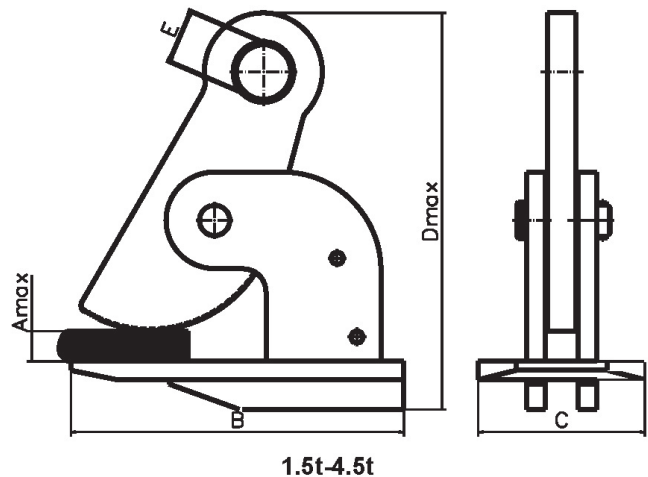
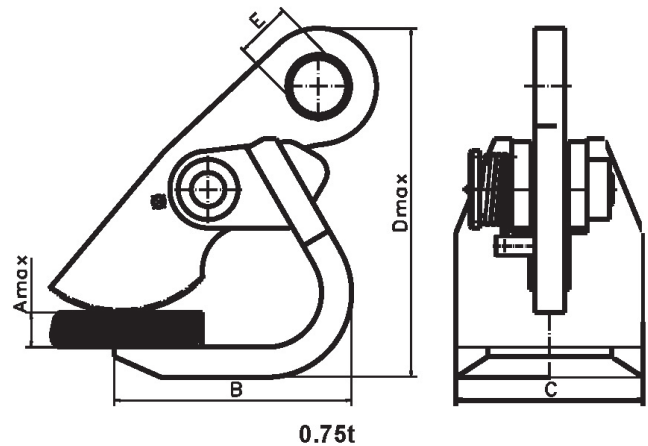




# Plate Clamps – Horizontal

## Global Lifting

- The Global Plate Clamps are manufactured to comply with AS4991
- These clamps are ergonomically designed to improve the user experience. They are compact and light-weight without compromising the quality of the design.
- Suitable for the lifting and transferring of steel plates and other materials in a wide variety of industries such as; shipbuilding, construction, fabrication, manufacturing and off-shore applications.



### SPECIFICATIONS

Model	Rated Capacity (Kg)		Dimensions (mm)					Net Weight (Kg)	
	Per Unit	Per Pair	A (Max.) (mm)	B (mm)	C (mm)	D (Max.) (mm)	E (mm)	Per Unit	Per Pair
GLHC075	750	1,500	0 – 50	127	100	218	φ30	4.1	8.2
GLHC150	1,500	3,000	0 – 50	220	110	270	φ36	7.4	14.8
GLHC250	2,500	5,000	0 – 60	260	130	315	φ40	13.8	27.6
GLHC450	4,500	9,000	0 – 100	290	165	425	φ40	28.6	57.2



# Wire Grips

NGK

- For bare copper cable, covered conductor and messenger wire.

## SPECIFICATIONS

Product #	Safe Working Load/Type	Min. Cable Dia. (mm)	Max. Cable Dia. (mm)	Weight (kg)
GRIPNGK1T	1 tonne L-Grip	4	22	1.1
GRIPNGK2T	2 tonne L-Grip	4	22	1.3
GRIPNGK2TW	2 tonne W-Grip	5	16	1.4
GRIPNGK3T	3 tonne Grip	8	22	3.0
GRIPNGK4T	4 tonne Grip	13	28	5.0



2 tonne L-Grip with Safety Latch



2 tonne W-Grip



3 tonne Grip

**N.G.K. NAGAKI**

# ELECTRIC HOISTS ALSO AVAILABLE

The Kito EQ is one of our most popular electric hoists due to its compact size and power.

- **Frequency inverter as standard**
- **Compact hook end approach**
- **130% speed at less than 30% WLL**
- **Electromagnetic pull-rotor brake**
- **Electronic thermal motor protection**
- **Electronic overload limiter**
- **Nickel plated load chain**
- **Available with gear or motorised trolley**

Low maintenance:  
No transformer  
No magnetic contactor  
No brake contactor  
No brake coil



## SPECIFICATIONS

Product #	Standard Lift (m)	Capacity (kg)	Lift Speed (m/min)	Headroom (mm)	Load Chain Dia. (mm)	Weight (kg)
CBLEK0125	3	125	17 - 2.8	395	5.6	30
CBLEK01253	6					32
CBLEK0250	3	250	10 - 1.7	395	5.6	30
CBLEK02503	6					32
CBLEK0500	3	500	7.6 - 1.3	410	5.6	32
CBLEK05003	6					34
CBLEK1000	3	1,000	7.1 - 1.2	465	7.1	42
CBLEK10003	6					46

# KITO



# Magnetic Lifters

## Pacific Hoists

Pacific Magnetic Lifters can be used in various industries for the lifting and moving of steel, engine parts, semi-manufactured goods and moulds, Due to its magnetic force, there is no need to use slings, clamps or other holding devices. This will eliminate the chance of damaging the lifted materials.

- The magnetic lifter features a breakaway force 3.5 times greater than the working load limit.
- Weight capacities are available from 100kg to 6000kg.
- No electricity needed which will increase product safety. Once operated there is less than 1% residual magnetism.
- The simple switch and safety button design allows for one handed operation.
- Use of plate with high-carbon content will reduce the absorbability to less than 50% of rated capacity. Use of plate with high carbon content is not recommended.

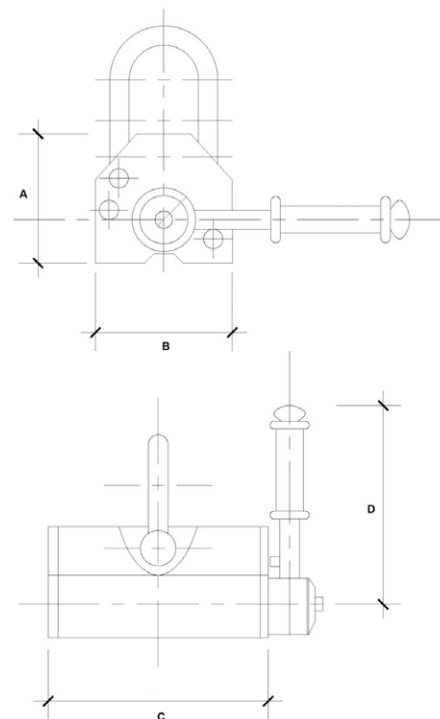


### SPECIFICATIONS

Model	Rated Capacity (Kg)	Cylindrical Carrying Capacity (Kg)	Max. Break Away Force (Kg)	Suitable Thickness of Plate (mm)	Net Weight (Kg)	Plate Material	Carbon Content
PML-1	100	50	350	> 25	3	≤ 45# Steel	Low
PML-3	300	150	1,050	> 35	10		
PML-6	600	300	2,100	> 40	24		
PML-10	1,000	500	3,500	> 50	50		
PML-20	2,000	800	7,000	> 60	125		
PML-30	3,000	1,200	10,500	> 80	240		
PML-60	6,000	1,800	21,000	> 120	440		

### DIMENSIONS

Model	A (mm)	B (mm)	C (mm)	D (mm)
PML-1	67	62	92	126
PML-3	91	92	162	155
PML-6	117	122	232	196
PML-10	163	176	258	285
PML-20	212	234	378	426
PML-30	261	286	458	521
PML-60	355	430	600	-



Pacific Hoists



# Magnetic Lifters

## ALFRA / Townley

Introducing the ALFRA TML Magnetic Lifting System, a smarter way to lift, move, position, align and transport metal sheet and piped product.

ALFRA's patented TML technology, which stands for 'Thin Material Lifting', generates an enormous holding force, even on extremely thin-walled magnetic material, allowing handling of materials with a thickness as low as 2mm.

Due to the higher holding forces TML produces, ALFRA is able to design and manufacture lifting magnets that weigh up to 70% less than comparable products on the market. As a result, ALFRA Lifting Magnets are much lighter and easier to handle in the workplace.

*Made in Germany, ALFRA has design and manufactured industrial products for more than 100 years and has a reputation for outstanding quality and product innovation.*

- 180° pivotable and 360° rotatable load swivel.
- Able to activate and use with one hand.
- Hardened steel bottom plate with TiN-coating eliminating the need to regrind the magnet's bottom plate: reduced maintenance.
- Slight premagnetisation for the easy positioning of the magnet.
- Magnets can be customised thanks to additional connection threads inside the housing.
- New design allowing for the use of the magnet even between the flanges of a steel beam.
- The magnetic field concentrates directly on the material and reduces scattering losses to a minimum.
- Magnets allow welding at a distance of just 15 mm (9/16") from the magnet's external side.



TML 100



TML 250



TML 500



TML 1000



TML 90R



TML 400R

### SPECIFICATIONS

Model	Max. Load Bearing Capacity (Kg)	Break Away Force	Min. Material Thickness (mm)	Dead Weight (Kg)	Dimensions L x W (mm)
TML 100	100	300Kg on 6mm Steel S235	1	1.7	82.5 x 80
TML 250	250	> 750Kg on 10mm Steel S235	2	3.5	191 x 71
TML 500	500	> 1,500Kg on 15mm Steel S235	2	7.3	265 x 118
TML 1000	1,000	> 1,500Kg on 15mm Steel S235	2	18.0	403 x 103

### SPECIFICATIONS

Model	Max. Load Bearing Capacity (Kg)	Pipe Diameter (mm)	Break Away Force	Min. Material Thickness (mm)	Dead Weight (Kg)	Dimensions L x W (mm)
TML 90 R	90*	25 – 200	> 270Kg on 6mm Steel S235	1	1.8	82.5 x 80
TML 400 R	400*	50 – 400	> 1,200Kg on 15mm Steel S235	2	8.2	265 x 118

\*Max. load-bearing capacity on round pipes: 20 – 50 % of fl at material subject to pipe diameter and material thickness



Passion for Tools

**TOWNLEY**  
FORGING AUSTRALIAN QUALITY

**THE RIGGING SHED**  
LIFTING & RIGGING EQUIPMENT SPECIALISTS



The Rigging Shed provides services in inspecting, repairing and testing chain slings.  
The Rigging Shed also offers mobile testing, with our technicians using tablets that update our online database, so you have access to the test results on completion of the test.

# THE RIGGING SHED

**LIFTING & RIGGING EQUIPMENT SPECIALISTS**

## FROM ON-SITE TO ON-LINE

Managing your lifting and rigging equipment supply and maintenance requirements

### Wangara

53 Prosperity Ave  
Wangara WA 6065  
ph (08) 9406 9999  
fax (08) 9406 9900

### Bibra Lake

2/34 Discovery Dve  
Bibra Lake WA 6163  
ph (08) 9494 5800  
fax (08) 9434 1042

### Kalgoorlie

25 Darcy Lne  
Kalgoorlie WA 6430  
ph (08) 9022 8600  
fax (08) 9022 8700

### Port Hedland

23 Pinnacles Street  
Wedgefield WA 6721  
ph (08) 9406 9999  
fax (08) 9406 9900

[www.theriggingshed.com.au](http://www.theriggingshed.com.au) | [info@theriggingshed.com.au](mailto:info@theriggingshed.com.au)



**Pacific Hoists**

**PVB  
ANCHOR**

**KITO**

**HITACHI**  
Inspire the Next

**MOCAL**

**VITAL**